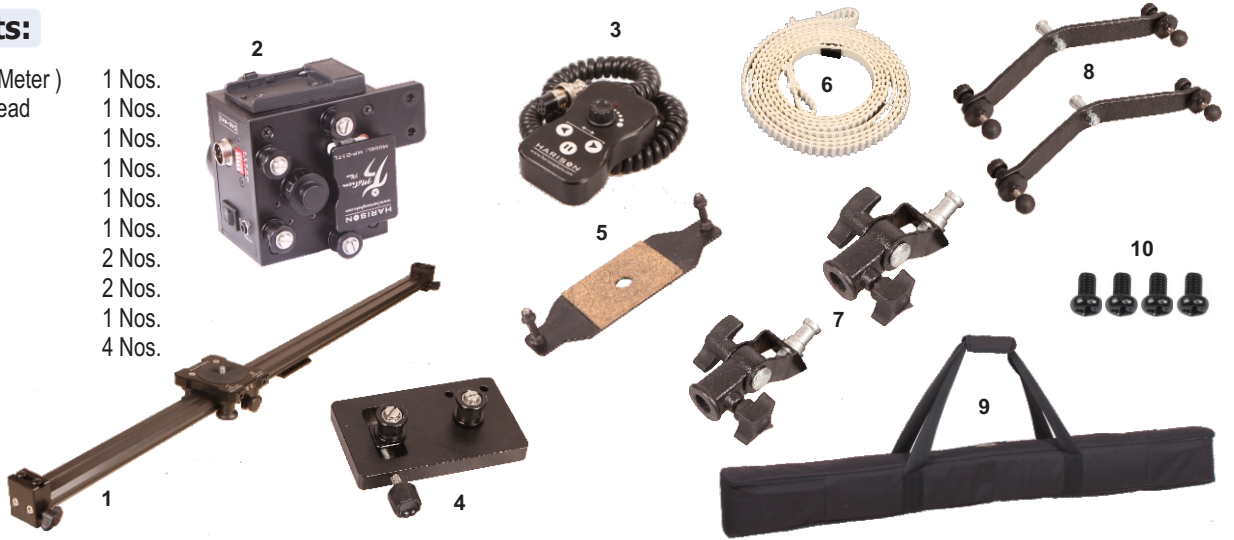


Package Contents:

- | | |
|------------------------------------|--------|
| 1. Camera Slider MP-01 (1 Meter) | 1 Nos. |
| 2. Motorised 'Motion Plus' Head | 1 Nos. |
| 3. Remote (with cable) | 1 Nos. |
| 4. Tension Adjustment Plate | 1 Nos. |
| 5. Head Plate | 1 Nos. |
| 6. Belt | 1 Nos. |
| 7. Tilting Bracket | 2 Nos. |
| 8. Base Bracket | 2 Nos. |
| 9. Carry Bag | 1 Nos. |
| 10. Screw (5mm x 15mm) | 4 Nos. |



Assembly :

1.



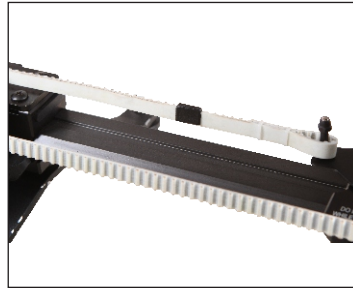
Attach the Motorised Motions Plus head to the camera slider using two screws (5mm x 15mm) provided.

2.



Attach the Tension Adjustment Plate to the other end of the camera slider using two screws (5mm x 15mm) provided.

3.



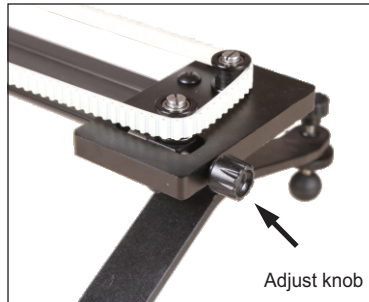
Attach a loop of the belt to the left post of the head plate and wind it through the idling and driving pulleys as shown in the figure.
Note: The teeth of the timing belt should be facing outwards.



4.



The other end of the timing belt is to be wound around the two idling pulleys of the tension adjustment plate and then to the other post of the head plate (figure) Tighten the timing belt by adjusting the tension adjust knob.



Adjust knob

5.



Place the Head Plate on the Carriage and attach the tilt head.

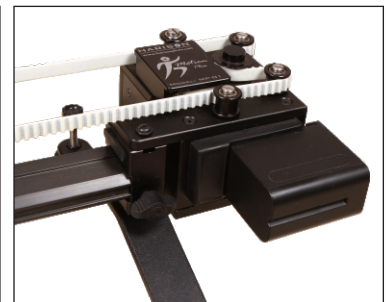
6.



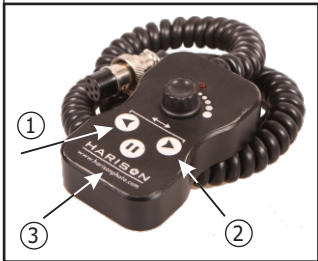
Connect the remote by inserting the six-pin jack into the socket as shown
Switch on Power
The red LED on the remote housing will begin to glow.
Mount your camera and the slider is ready to be used.



Install the battery



Mode :



1. LEFT BUTTON
2. RIGHT BUTTON
3. PAUSE BUTTON



Mode: 1
A single press of the "LEFT" button will enable the carriage to travel to the left-most position and then stop. Similarly, a single press of the "RIGHT" button will enable the carriage to travel to the right-most position and then stop.



Mode: 2 (Toggle Mode)
If you press the "LEFT" and "RIGHT" buttons together for two seconds the slider will enter the Toggle Mode. In this mode the carriage will travel automatically between the left-most position and the right-most position and continue doing so until the power is switched off.



Mode: 3 (Time-Lapse Mode)
If you press the "LEFT" and "PAUSE" buttons together for two seconds the slider will enter the Time-Lapse Mode. In this mode the carriage will travel left or right only as long as the "LEFT" or "RIGHT" buttons are pressed. This mode can be used for Time-Lapse Photography along with a remote shutter release system for the camera.



Mode: 4 (Time-Lapse Mode)
In this Mode the carriage stops for a specific duration (set by the micro-switches) after moving for a pre-defined incremental distance.

Switch Set	Distance in mm	Stop Duration	No. of Stops
	3.33 mm	2 sec.	300
	3.33 mm	5 sec.	300
	3.33 mm	10 sec.	300
	3.33 mm	20 sec.	300
	3.33 mm	30 sec.	300



Connect the remote-shutter release as shown.



Set the camera to repeat in remote shutter mode.

Set the Exposure, Zoom, focus setting on the camera.

For best result move the carriage to one end of the rail so as to get the full length travel.

As soon as the carriage stops, the camera socket activates the shutter release remote thus clicking a picture.

How to use:

(A)

Motorised Camera Slider MP01 is a versatile motion control system for ultra smooth video and even a time-lapse option. Precise and fully adjustable motorized control of your camera movement will allow you to create a wide variety of stunning footage.



The slider features a set of removable legs which attach to the end of the slider with a single thumb screw for a quick and tool free setup. The legs have adjustable feet with a grippy rubber so you can get a stable setup even when the terrain is uneven.



(B)



Our heavy duty motors have a 9 kg (20 lbs) weight capacity when moving the camera horizontally, and a 4.5 kg (10 lbs) weight capacity when lifting the camera vertically. The slider can be tripod mounted for variable height, and can be angled for dramatic incline moves.



Use the tilting bracket (Part no. 7) to angle the slider.

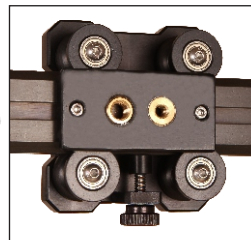
(C)



The motorized slider MP-01 can be mounted on the HARISON SUMO Stand for horizontal panning shot and also vertical top-down shots.



(D)



The slider rail has tons of mounting points for attaching to tripods, light stands, etc. There are 1/4" and 3/8" mounting points all along the rail to give you a wide selection of mounting options.

Manual slider to Motorized slider

The Camera slider MP-01 can be used as a stand-alone manual camera slider. It can be also be converted into a motorized slider as follows:

